

TARRANT COUNTY CHESS NEWSLETTER

Alliance Chess Club

Tuesdays, La Madeleine's, N. Tarrant Parkway 6:30-Close

Fort Worth Chess Club

Saturdays, Southwest Regional Library 1:00-6:00

Arlington Chess Club

Thursdays, Social Bakehouse Café, Arlington 6:30-8:30

Tarrant County Chess Club

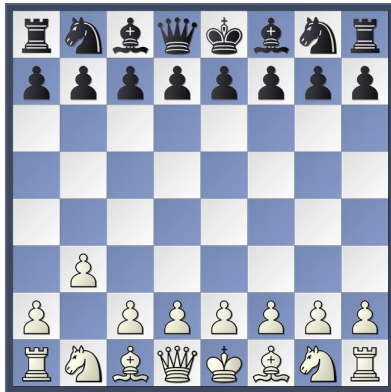
Tuesdays, Barnes & Noble, Hurst 6:30-10:00

Larsen's Opening

ECO: A01

Larsen's Opening (also called the Nimzo-Larsen Attack or Queen's Fianchetto Opening) is a chess opening starting with the move:

1. b3



It is named after the Danish grandmaster Bent Larsen. Larsen was inspired by the example of the great Latvian-Danish player and theoretician Aron Nimzo-

witsch (1886–1935), who often played 1.Nf3 followed by 2.b3, which is sometimes called the Nimzowitsch–Larsen Attack. It is classified under the A01 code in the Encyclopedia of Chess Openings (ECO).

The flank opening move 1.b3 prepares to fianchetto the queen's bishop where it will help control the central squares in hypermodern fashion and put useful pressure on Black's king-side. The b2-bishop is often a source of recurring irritation for Black, who should not treat it lightly.

Although Larsen was initially very successful with this opening, it suffered a setback in the 1970 USSR vs. Rest of the World match in Belgrade, where Larsen played it against reigning World Champi-

on Boris Spassky and lost in 17 moves. Larsen was also decisively defeated when playing it against Rosendo Balinas, Jr. at Manila in 1975.

Notably, this opening received interest from Bobby Fischer the same year, who employed 1.b3 on at least five occasions, winning all five, including games with GM Filip, GM Mecking (Palma de Mallorca 1970 Interzonal), GM Tukmakov (Buenos Aires 1970), and GM Andersson (Siegen 1970). Today, Larsen's Opening is occasionally used at the GM-level, with top Grandmaster Richárd Rapport employing it regularly and successfully.

Source: Wikipedia

Larsen's Opening: Main Line

1.b3 e5! 2.Bb2 Nc6 3.e3 Nf6 4.Bb5 d6 5.Ne2 Bd7 6.0-0 a6 7.Bxc6 Bxc6 8.d4 Qd7 9.c4 g6=



Source: Small Encyclopedia of Chess Openings

Upcoming Events for Tarrant County

- April 7th**
Arlington Chess Club Open 31
- April 14th**
Many Springs 111
- April 21st**
Red River Shootout (RRSO) XVI

JOIN US!!!

Larsen's Opening: An Annotated Grandmaster Game

Fischer, Robert James – Tukmakov, Vladimir B [A01]
Buenos Aires 10/43, 1970

1.b3 e5 2.Bb2 Nc6 3.c4 Nf6
[3...g6!?!]

4.e3 Be7 5.a3! 0-0 6.d3 d5 7.cxd5
Qxd5± [7...Nxd5=]

8.Nc3 Qd6 9.Nf3 Bf5 10.Qc2 Rfd8
[10...Rad8 11.Rd1 Rfe8 12.Be2 Bf8
13.0-0 Qe7 14.Nd2 (14.b4 e4)
14...Bg4=]

11.Rd1 h6 12.h3 Qe6 13.Nd2
[13.Be2 e4!⚡]

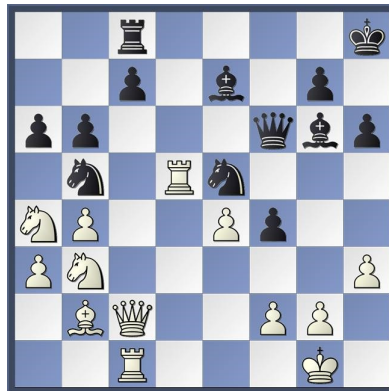
13...Nd7 14.Be2 Kh8? [14...Qg6!
15.0-0? Bxh3]

15.0-0 Bg6 16.b4!± a6 17.Rc1! Rac8

18.Rfd1 f5 19.Na4 Na7?! [19...Nf6±]
20.Nb3 b6 21.d4! f4? [21...Nb5±]

22.e4! Nb5 [22...exd4 23.Nxd4 Qxe4
24.Bd3+~]

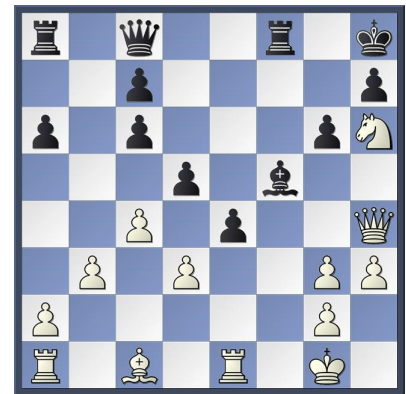
23.Bg4+- Qf6 24.dxe5 Nxe5
25.Bxc8 Rxc8 26.Rd5! [26.Rd5 Bd6
27.Nxb6 Re8 28.Nc4] 1-0



Tactic of the Month

Gibson, Jeffrey (1450) – Merrill, Brad (1913) [A01]
Framingham Chess Club Champ. 1987

White to Move

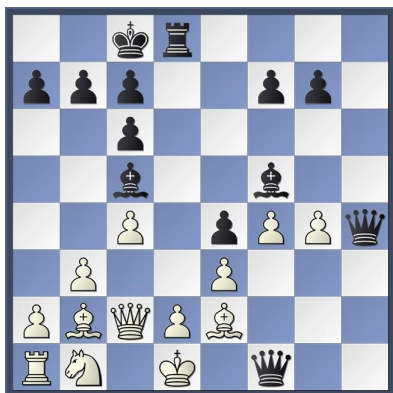


Answer: 26. Bb2+ d4 27. Bxd4 Rf6 28. Bxf6#

Larsen's Opening: Other Games

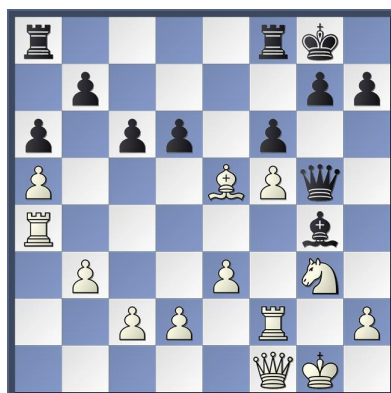
Larsen, Bent – Spassky, Boris V [A01]
World – USSR 9/25, 1970

1.b3 e5 2.Bb2 Nc6 3.c4 Nf6 4.Nf3
e4 5.Nd4 Bc5 6.Nxc6 dxc6 7.e3
Bf5 8.Qc2 Qe7 9.Be2 0-0-0 10.f4
Ng4 11.g3 h5 12.h3 h4 13.hxg4
hxg3 14.Rg1 Rh1 15.Rxh1 g2
16.Rf1 Qh4+ 17.Kd1 gxf1Q+ 0-1



Rapport, Richard – Onischuk, Alexander [A01]
Chess Olympiad Tromso, 2014

1.b3 e5 2.Bb2 Nc6 3.e3 Nf6 4.Bb5
Bd6 5.Na3 a6 6.Bxc6 dxc6 7.Nc4
Qe7 8.a4 0-0 9.a5 Bg4 10.Ne2
Nd7 11.0-0 e4 12.Nxd6 cxd6 13.f3
exf3 14.gxf3 Bh3 15.Rf2 Ne5
16.f4 Ng6 17.f5 Qg5+ 18.Ng3 Ne5
19.Ra4 Bg4 20.Qf1 f6 21.Bxe5 1-0



Learn More About Larsen's Opening

On the Web:

https://en.wikipedia.org/wiki/Larsen%27s_Opening

http://billwall.phpwebhosting.com/articles/larsen_opening.htm

Books:

The Nimzo-Larsen Attack: Move by Move
By Cyrus Lakdawala

Nimzo-Larsen's Opening: Double Fianchetto Attack
By David Robert Lonsdale

Nimzowitsch/Larsen Attack
By Raymond Keene

Larsen's Opening (very rare)
By Bill Wall

Videos: (also check out YouTube!)

b3 Bash - ChessLessons.com
Foxy Videos Vol 70 - iChess.net